

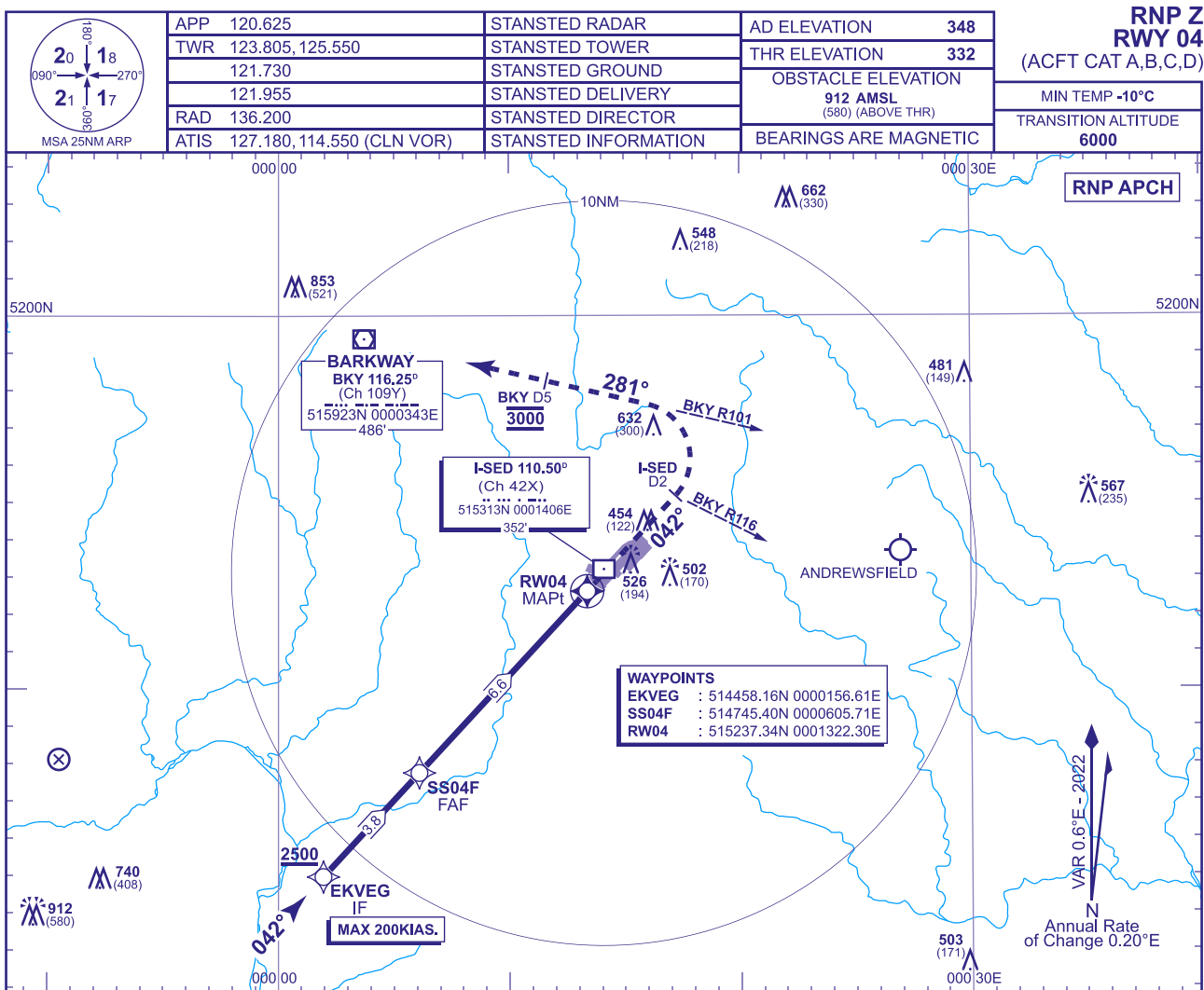
LONDON STANSTED

APP	120.625
-----	---------

RNP Z

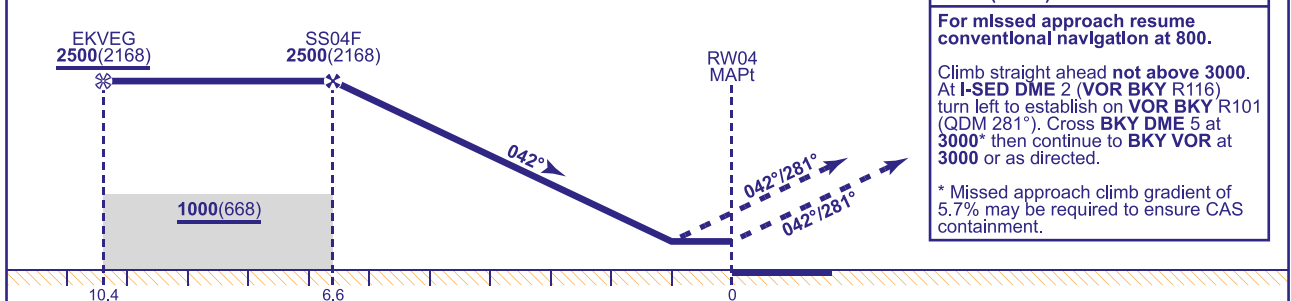
RWY 04
T A B C D)

(ACFT CAT A,B,C,D)



RECOMMENDED PROFILE: VERTICAL PATH ANGLE 3.0° (LNAV 5.2%) 320FT/NM						
NM to RW04	6	5	4	3	2	1
ALT(HGT)	2300(1968)	1980(1648)	1660(1328)	1340(1008)	1020(688)	700(368)

TCH 53

MAPt (LNAV): RW04

Aircraft Category		A	B	C	D	Rate of descent	G/S KT	160	140	120	100	80
OCA (OCH)	LNAV/VNAV	650(318)	650(318)	650(318)	650(318)		FT/MIN	850	740	640	530	420
	LNAV	670(338)	670(338)	670(338)	670(338)							
VM(C)OCA (OCH AAL)	Total Area	900(552)	900(552)	1030(682)	1040(692)							

AIRCRAFT UNABLE TO RECEIVE VOR DME BKY
Advise ATC. Radar direction will be passed for missed approach procedure.

NOTE 1 MAX 185KIAS for MAP until established on BKY R101.

CHANGE (1/24): STANSTED AD FOOTPRINT UPDATED.